

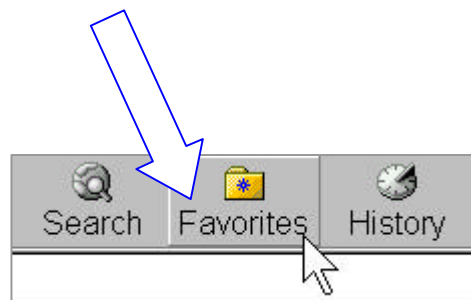
# Module 3 homework

Practise how to:

1. Go to a web address



2. Save your favourite webpages:



3. Work Offline and save \$\$\$

1. Go to a web address



Every page on the web has a unique address.  
A web address is found in a box at the top centre of the screen



A web address usually starts with <http://www>  
e.g. the ABC website looks like this:

<http://www.abc.net.au/>



Here's a tip!



You don't need to type the http://

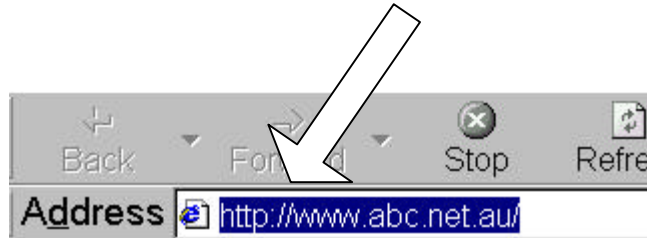
Most local newspapers have new web addresses you can try.

At the newsagent and some supermarkets, try "Netguide" – only \$3.50.

## Module 3

To enter a new address:

- 1 Click the mouse anywhere in the current address.  
This will highlight the current address **blue**.



- 2 Type the new address.

When you begin typing, the blue highlighted text will disappear and the new text will appear in the address box.

Try these addresses:

[www.yahoo.com.au](http://www.yahoo.com.au) (search directory)

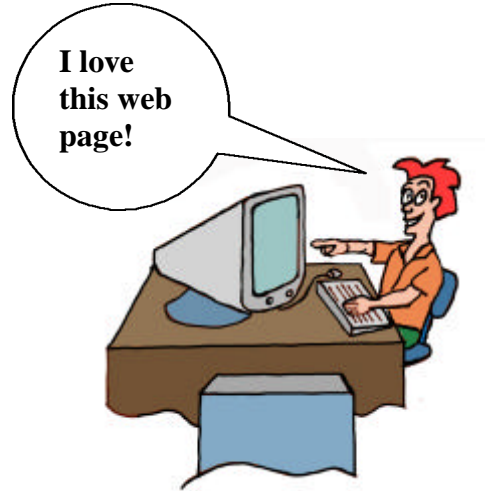
[www.slq.qld.gov.au/qldweb.htm](http://www.slq.qld.gov.au/qldweb.htm) (Q'ld State Library)

[www.greatoceanrd.org.au/](http://www.greatoceanrd.org.au/) (Great Ocean Road, Vic)

- 3 Press the enter key on the keyboard and the new web page will appear.

**2. Save a webpage to Favorites** 

When you find a web page you would like to visit often, it is easy to save it in Favorites.

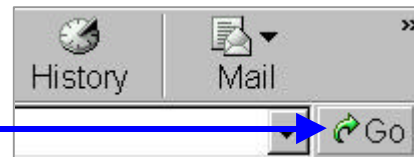


Save the **University of Queensland** website in **Favorites**:

**1** Type this address



**2** Click on the GO button on the right

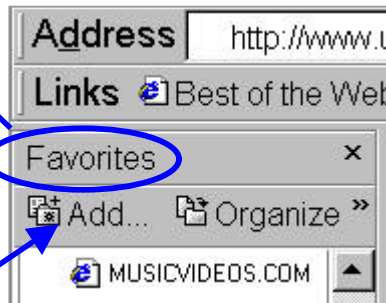


**The University of Queensland website will appear.**

**3** Click on Favorites:

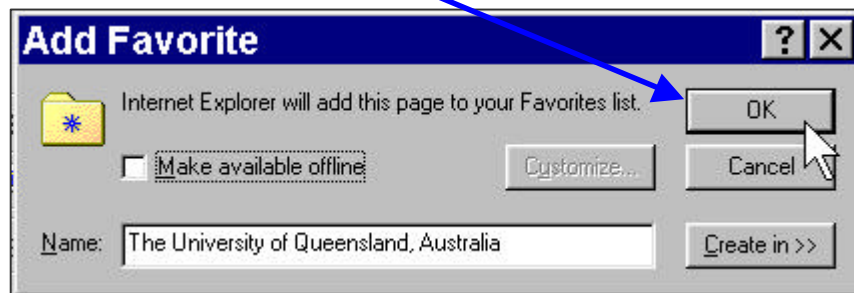


4 A Favorites window will appear to the *left* of the screen.



5 Click on **Add**

6 A box will appear. Click **OK**. Close the box.



7 Check that your webpage  
has been saved.  
Scroll down and look for  
The University of  
Queensland website.

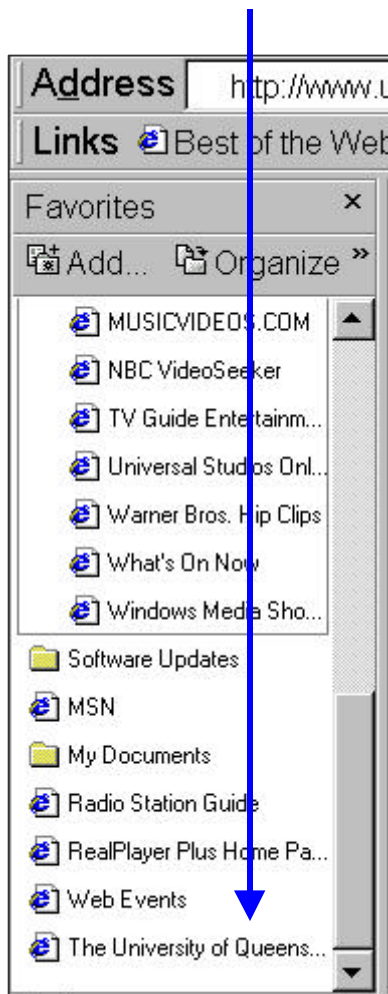


### How to find your Favorites:

1 Click on Favorites



2 Scroll down the list. When you find the Favorite you are looking for, **click on it.** The web will appear in a window on the right of the screen.



### Work Offline & save \$\$\$\$:

Ask your tutor these questions:

- Do I have **unlimited hours** to surf the internet?
- Do I have **a limit** – for example, 10 hours per month?
- Is my Internet connection **free**?

Your tutor will tell you if you need to **Work offline**.

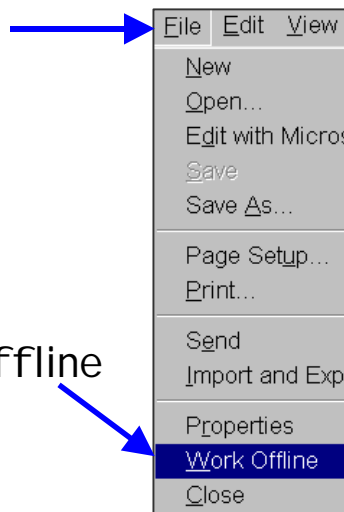
When you **Work offline**, you are **not** connected to the Internet.  
So you save Internet hours and \$\$\$\$\$\$\$\$\$

You can still do these things when you work offline:

- Read a web page
- Read your email
- Write an email

**To read a webpage Offline:**

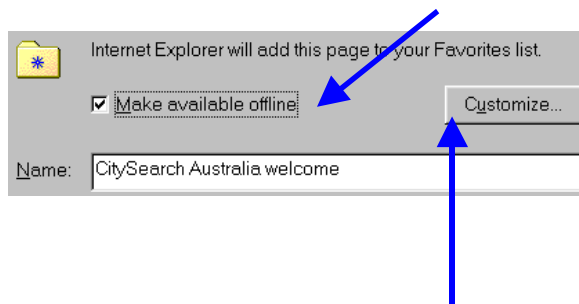
1 Click on File



2 Click on Work offline

If you need to connect to the hyperlinks on this website, do the following:

- 1 Save the web in **Favorites**
- 2 Tick the Make available offline box.



- 3 Ask your tutor to help you Customize the web for viewing.

REMEMBER: to connect to the Internet again, click on Work Offline to remove the tick.

